

How to Install and Use Collage Demo Software

About Collage Demo Software

This is a limited version of the Collage Layout Software. Although you cannot create jobs or output cylinders, you can open the supplied Collage jobs, and get to know all the features of the Layout Editor. Note that the demo version does not include all modules shipped with the full product, such as the Defaults Editor, Ink Volume Calculator, and more.

Limitations of the Demo Software

You can open the sample jobs supplied with this demo. You cannot create a new job. Some items on Collage menus are disabled.

You can change the sample jobs in any way you please, but you cannot save those changes.

You cannot output the job to an engraver or any other output device, including printers. You cannot generate tiff files, fast advance files, or job tickets.

Because Collage's built-in RIP is not present in the demo software, you cannot test the PDF workflow.

Documentation

Included with the demo software is the ***Collage Getting Started*** manual in PDF format. This document includes information on all the modules of Collage, including the ones not installed with the demo version.

The ***Collage Help*** is also installed with the demo software. It can be opened using the icon on the desktop, or when using Collage, click Help > Help Topics. This help is very complete, explaining all features and functions of all Collage modules in great detail.

Installing Collage Demo Software

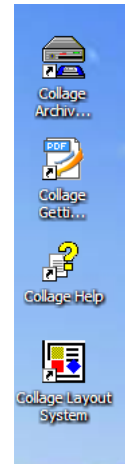
Requirements: Windows XP or Windows Vista. You also need approximately 250 MB of free space. We recommend a dual-core computer with 2 GIG RAM.

Language: The Collage software is localized into English, French, German, Italian, Polish, or Spanish (as set in Windows Regional Options from Control Panel).

To install the demo software:

1. Download the install file from the website, if you have not yet done so. Click Save File to save it to your desktop.
2. Double-click the file CollageDemo.exe. If a security warning displays, click Run.
3. The Collage Install wizard starts. Follow the instructions in the wizard to install the software.
4. When the installation is complete, restart your computer.

The Collage Layout System demo software, the Collage Archive Manager, the Collage Help, and the Collage Getting Started Guide are all installed. They can be opened from the icons on your desktop, as shown in this picture:



Note: Be sure your computer has completely finished restarting before you start using Collage.

Windows Firewall

The Windows Firewall will prevent Collage from running. When you first start Collage or the Archive Manager, you will need to set up an exception in the Firewall to allow Collage to run.

Installing Additional Collage Sample Jobs

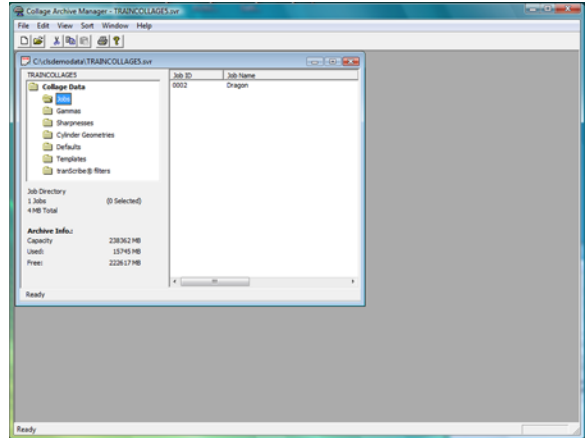
The Collage demo includes one sample job, plus some supporting files, such as gamma and sharpness files.

If you want some other sample jobs to look at, you can download them from the Daetwyler R&D website. You would then use the Collage Archive Manager to copy the jobs into Collage.

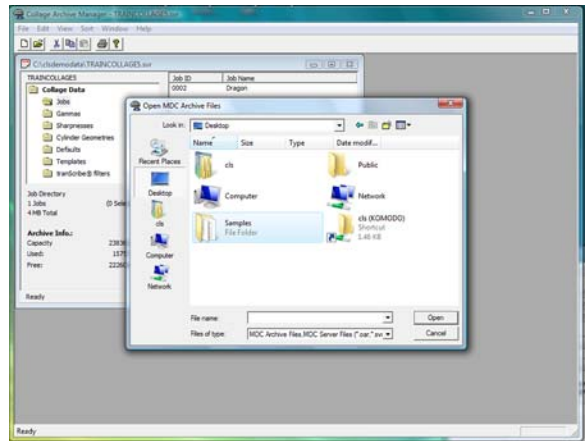
1. Download the sample job file from the website, if you have not yet done so. Click Save File to save it to your desktop.
2. Double-click the file Samples.exe. When asked where to extract the file, accept the default location, and click Extract.

A folder called Samples is placed on your desktop.

- Double-click the Archive Manager icon on the desktop. The Archive Manager window opens, with one sub-window showing one job.



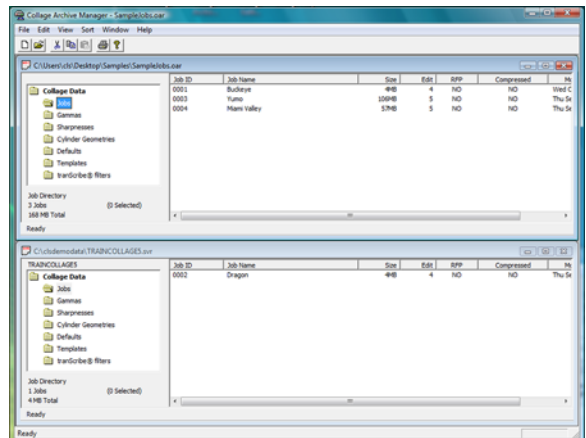
- From the File menu, click Open. Navigate to the folder called Samples. Select the file called SampleJobs.ear, and click Open.



- There are now two sub-windows inside the Archive Manager.

One shows the file on your computer, and the other shows the files in the archive.

Press the F12 key to arrange the sub-windows so you can see both of them at the same time.



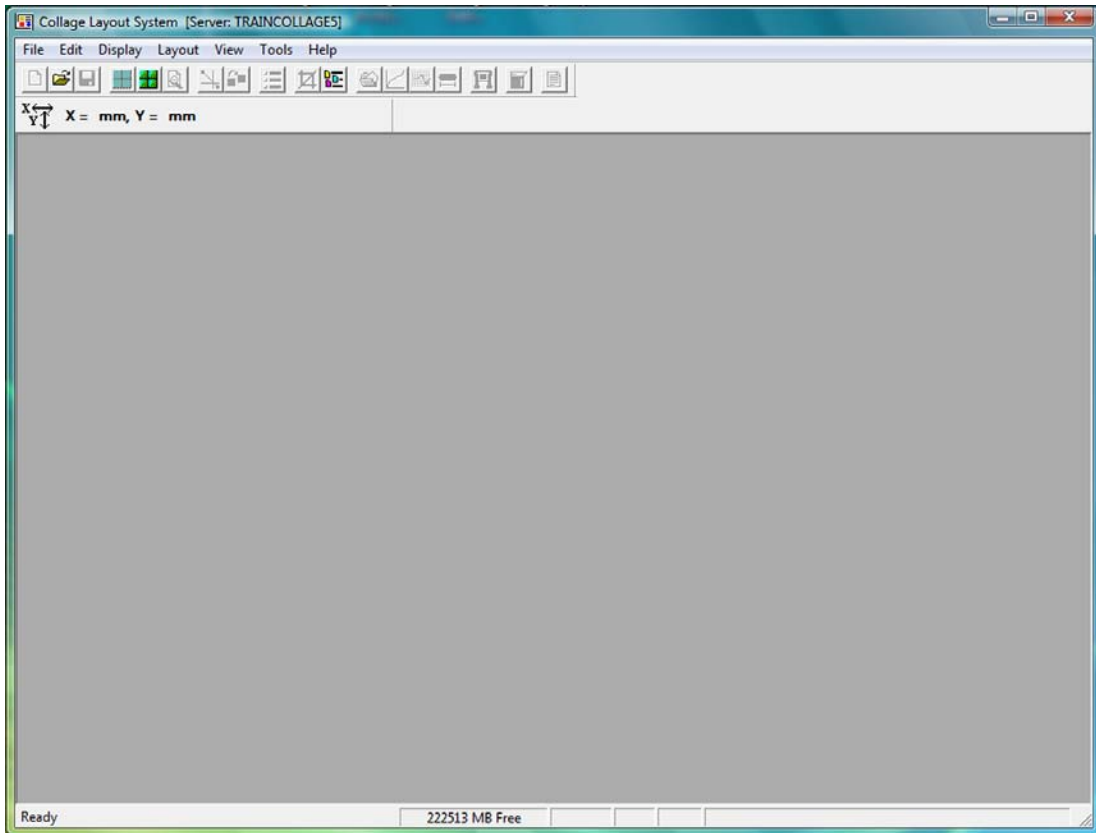
- Files are copied from the archive to your computer using standard Windows “Drag and drop”. Select all the jobs in the SampleJobs archive, and drag them to the sub-window of your computer.
- Close the Archive Manager when you have copied all the files over.

Using Collage Quick Start

To start Collage:

- Double-click the Collage Layout System icon on the desktop.

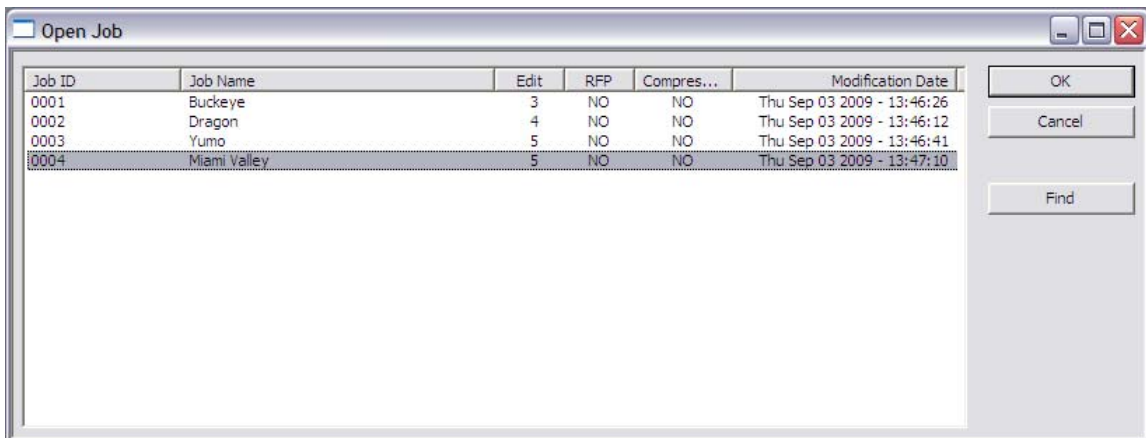
The Collage Layout editor opens. It is empty; you must select a job to open.



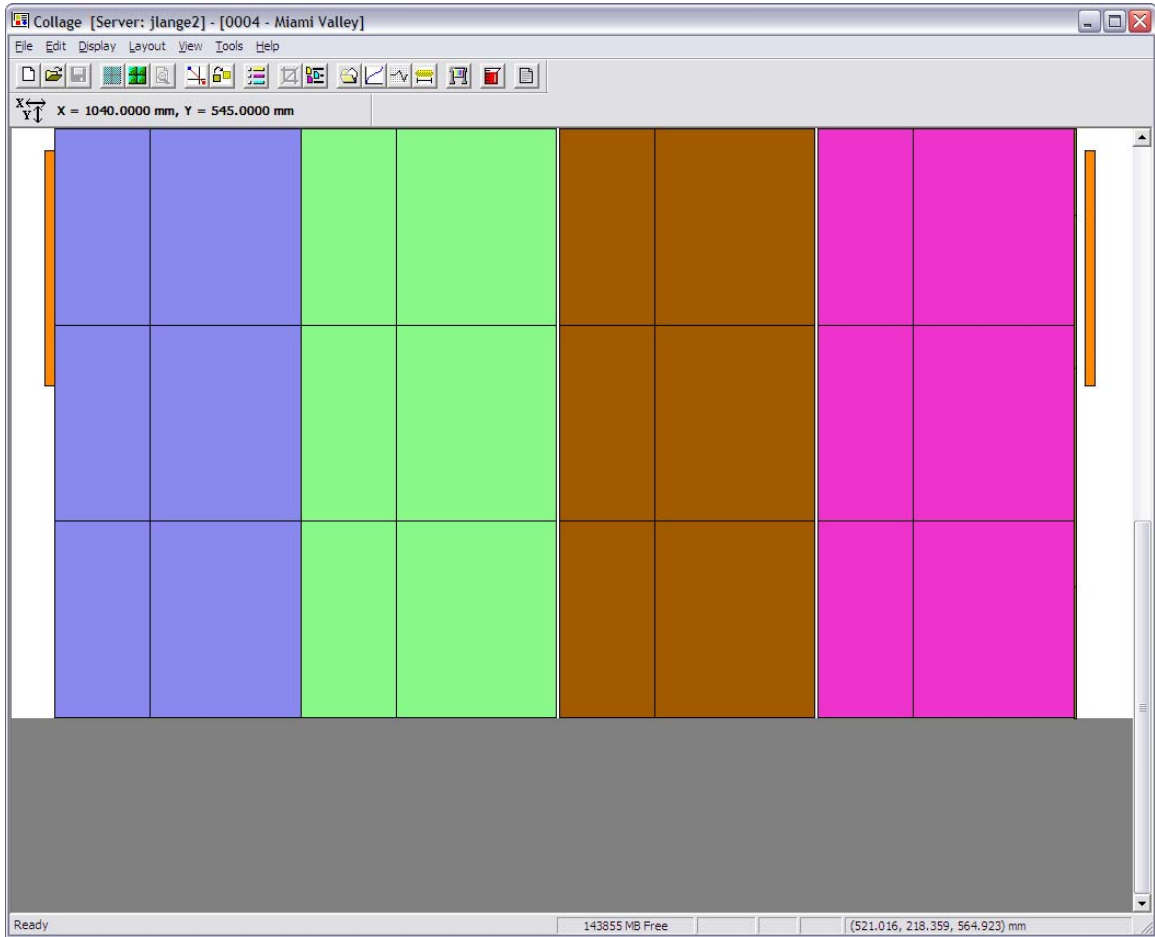
Open a Job

To open a sample Collage job:

1. From the File menu, click Open Job. The Open Job window displays, listing the sample jobs..

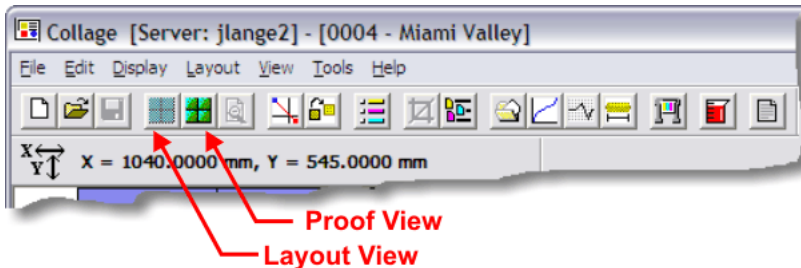


- Click on a job and click OK. Or you can double-click a job. The job opens in the editing area, in layout view. This is a way users can work quickly with grids.



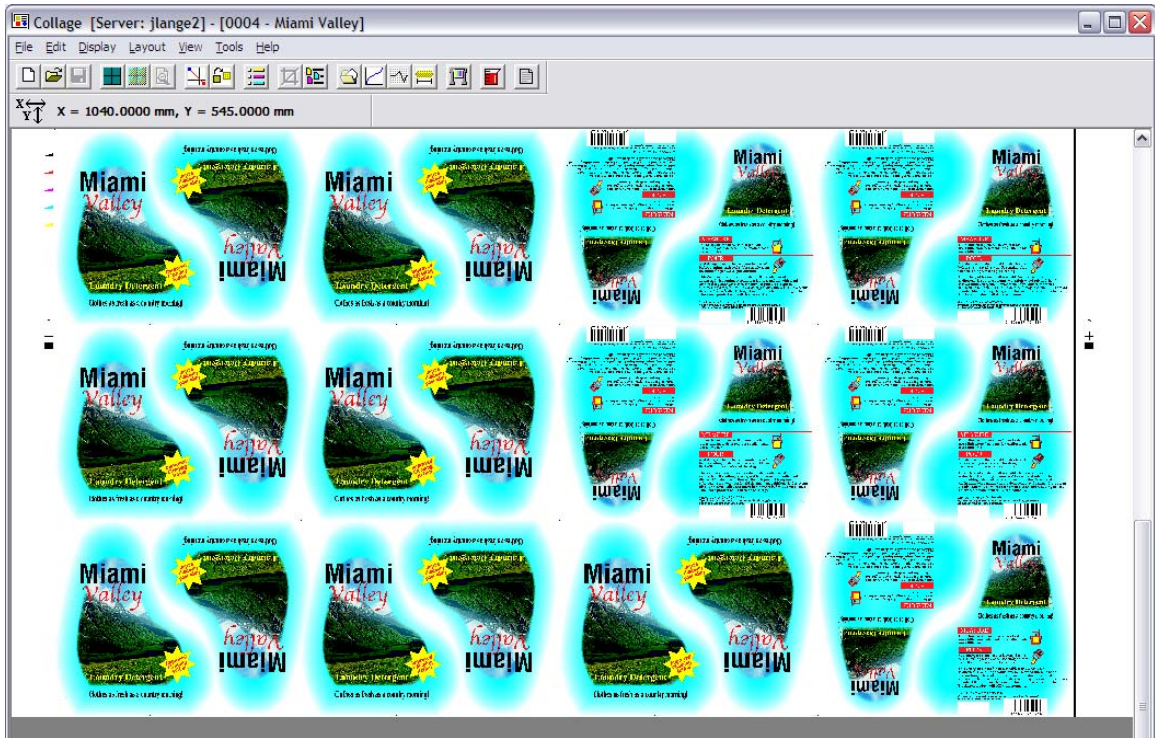
Note: The *Collage Getting Started* manual explains all the items in this window.

- To change to Proof View to see the images in the job, press the F3 key, or click the Proof View icon in the toolbar.



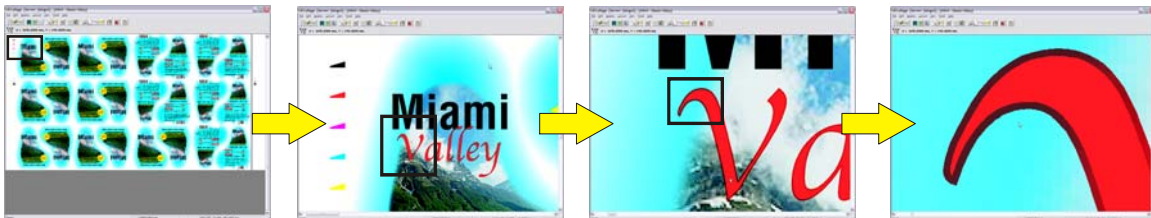
Images need to be processed for display; a status bar displays the progress.

Then the job displays in full color.



Zooming Up

To zoom up on an area of the image, click and drag a rectangle. Keep dragging rectangles to zoom up closer and closer, even to the pixel level.



Zooming Down

To zoom down to the previous view, right-click on the image and select Zoom Out from the menu. If you've zoomed up several times, you can zoom back down several times.

To zoom to the top (the full image), right-click on the image and select Zoom Top. Or just click the Zoom Top button in the toolbar.



Soft Proof Separations

From the Display menu, select Soft Proof Properties, or click the Soft Proof Properties button in the toolbar.



The Soft Proof Properties window displays.

Change some item on this window and click Apply to see the results in the Collage window.

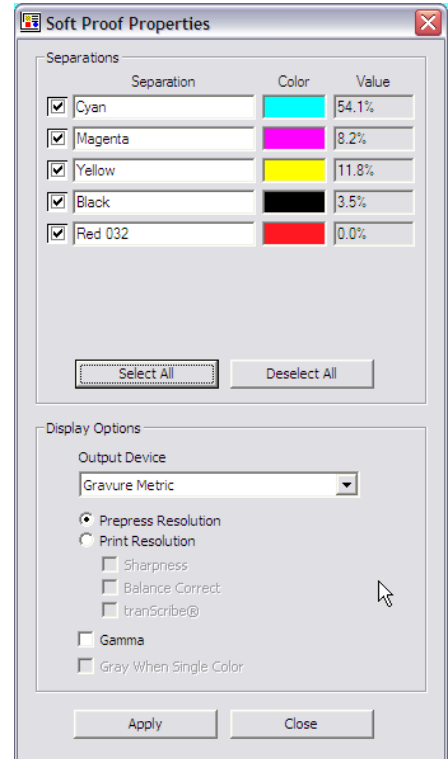
For example, clear a checkbox to turn off one of the separation colors.

Prepress Resolution shows the image as the Mac operator would see it. Print Resolution shows the image data as it will be output, according to the device selected in the Output Device menu. Zoom up closely to see the difference.

You can also see the results of the Gamma and Sharpness curves applied (if any – not all sample jobs have Gamma or Sharpness selected).

Always click Apply after making a change in the Soft Proof Properties. You can leave this window open while you try the various settings.

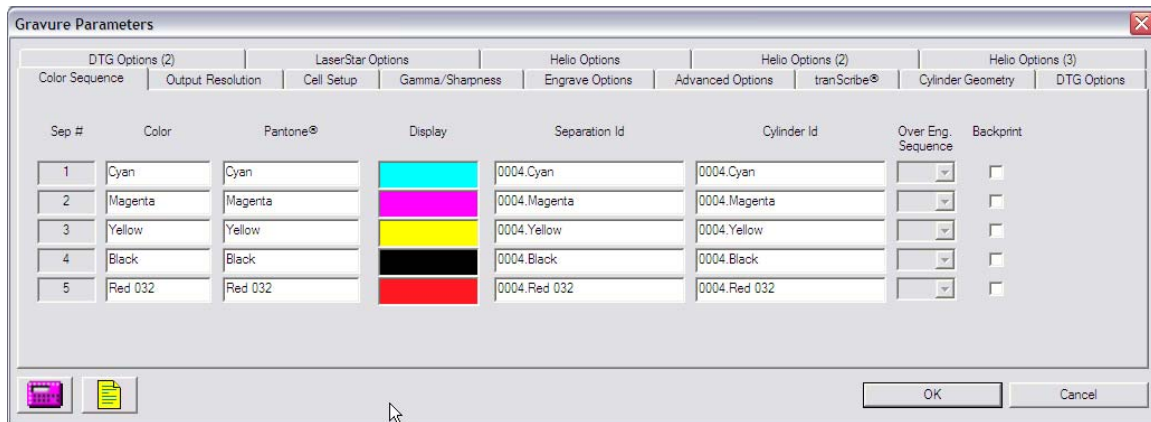
Checking the job on-screen, before committing to copper, is a powerful tool in Collage.



To view or change output parameters

From the File menu, click Gravure Parameters. The pages in this window control the output settings. The Demo software includes pages for all output devices.

For example, you could change the Output Resolution (Screen and angle) or set or change the Gamma or Sharpness on the Gamma/Sharpness page.



For information on the pages of the Gravure Parameters window, see the online help or the *Collage Getting Started* manual.

