

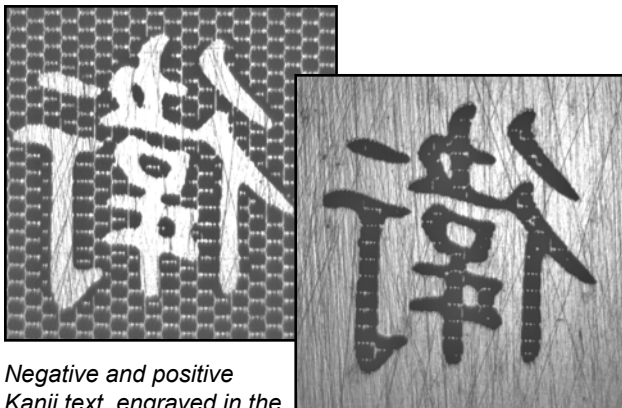
Another major quality improvement from Daetwyler with *Real-Time TranScribe*, featuring *AccuEdge*

Daetwyler is releasing a new version of the successful *TranScribe*® Engraving System. The new *TranScribe* with *AccuEdge*™ system greatly expands on the original capabilities by offering both quality and productivity improvements.

Productivity Enhancements

The *TranScribe* system offers outstanding quality for fine linework and text, but in the past, that quality has required extra time for pre-processing before engraving actually began. The new *TranScribe* system with *AccuEdge* includes real-time engraving, a function common with traditional Daetwyler engraving. Now as soon as the job layout is complete, the job is ready for engraving. All processing of the advanced *TranScribe* cell patterns are done during engraving. Eliminating this step on the *Collage* workstation permits immediate viewing of cells when any changes to the *TranScribe* settings are made, allowing you to quickly adjust settings to produce the best results.

Another productivity enhancement – though you can make an argument for quality too – is the ability to define different *TranScribe* effects to specific areas. The previous version only allowed the entire cylinder to be affected by one style of *TranScribe* engraving. Mixed positive and negative text could use only one effect, resulting in good but not optimal results. Now the user can select different *TranScribe* effects (1) for different areas of the cylinder. This optimizes the results for positive and negative text and produces the highest quality, while making only one engraving pass and with no pre-processing.

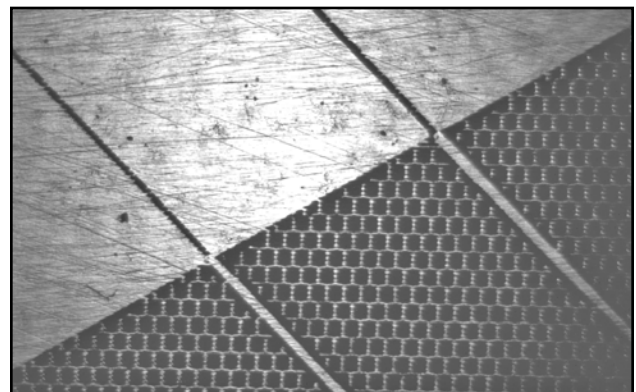


*Negative and positive Kanji text, engraved in the same pass, clearly shows the quality achieved with the *TranScribe* system.*



User defined characters for package identification and color blocks are now possible on *TranScribe* cylinders. The implementation of these functions greatly reduces the amount of time required to create *Collage* layouts that require package ID numbers. As with traditional engraving, any font supported by the Windows operating system can be used for the character generator function.

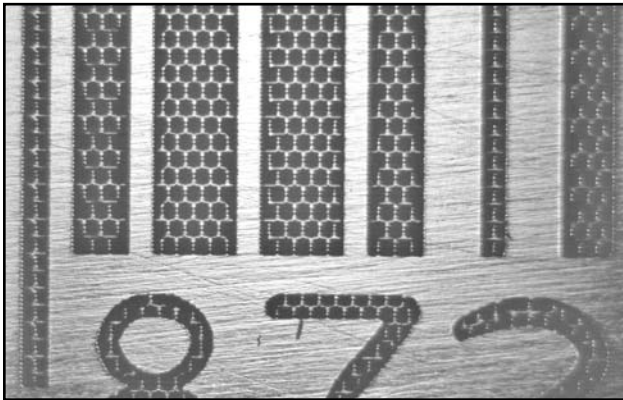
As soon as the layout is complete, the job is ready for engraving.



*New *TranScribe* capabilities allow mixing positive and negative linework with excellent results.*

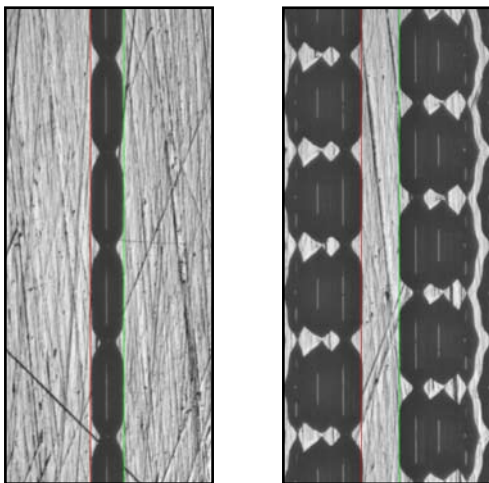
Quality Enhancements

Maintaining the correct line thickness is important, especially with bar codes. The latest version of *TranScribe* includes the new *AccuEdge* process. This new feature analyzes the line weight of the original artwork and then makes subtle adjustments to the engraving data. With the *AccuEdge* process, the *TranScribe* system modifies the cell sizes to engrave lines that match the width of the original image. This means the line weights of bar codes and text are much more accurate and consistent with the original artwork.



The AccuEdge process ensures line weights are the same between original and engraved images.

The new *TranScribe* with *AccuEdge* system produces seamless, continuous image around and across the cylinder. The prior *TranScribe* version required images that were isolated, with no continuation of image between the stepped and repeated locations. Now any image type can be engraved, so more jobs can see the quality benefits of the *TranScribe* system.



Fine 0.4 mm lines showing seamless image across the rotational start point.



Another example of the outstanding quality of the TranScribe System with AccuEdge processing.

Line weights of bar codes are consistent with the original.

Simplified Operation

One other area where the new *TranScribe* system has been improved is the operator interface. We have created a group of filters optimized for different types of work, including positive and negative linework as well as several other image types. This preset group of filters reduces the learning curve for using *TranScribe*, and gives new users excellent results immediately. For those accustomed to the more advanced filter controls, the opportunity still exists to create and save user-defined filters.

The extraordinary quality benefits of the *TranScribe* system are available for virtually any Daetwyler engraver. The *TranScribe* System is a package consisting of hardware – primarily a *TranScribe*-capable engrave head – and *Collage* software. Any *GRAVOSTAR* engraver using the *Collage* System with RTI engraver controllers can be upgraded with the *TranScribe* system. (Note: This is also true for many existing OEE engravers.) The new version is available to all *Collage* users currently using the *TranScribe* system. Customers with Software Maintenance Agreements will receive the software upgrade for free. Users not covered by a SMA can upgrade to the new *TranScribe* by purchasing the software upgrade.

(1) Some limitations apply when using different *TranScribe* styles to be engraved at one pass.